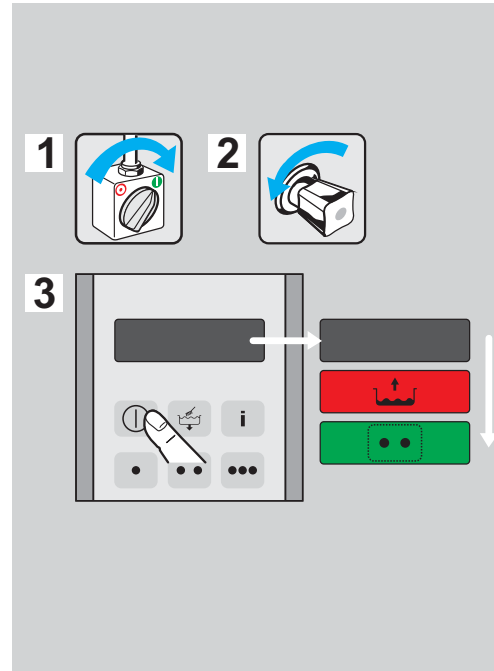


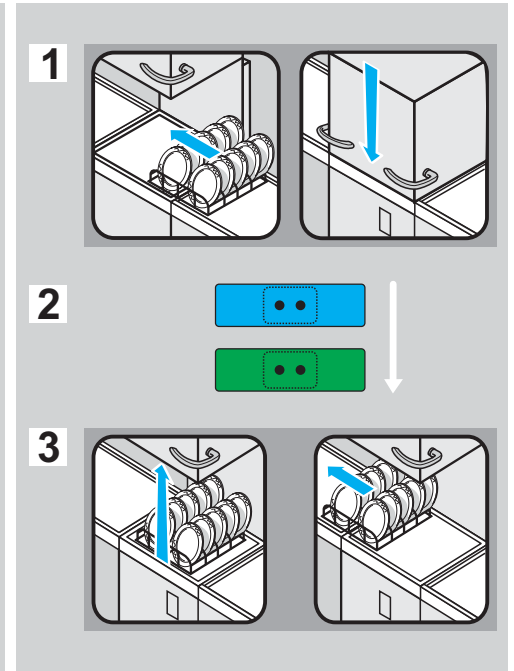
# PT-500



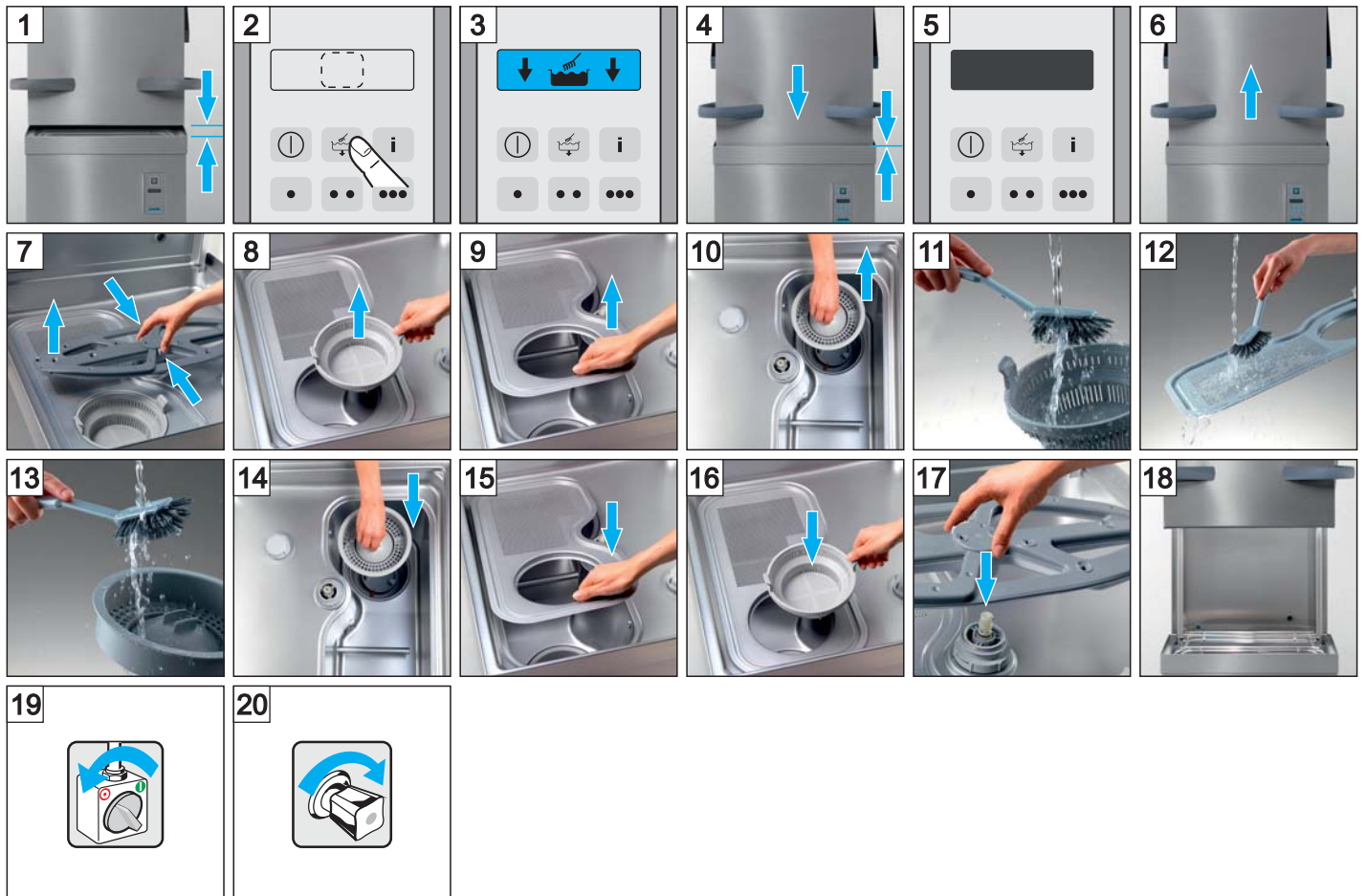
## Maschine einschalten



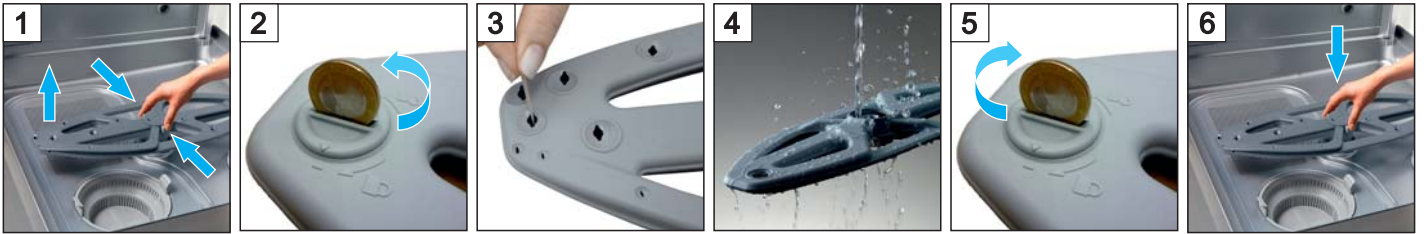
## Spülen



## Ausschalten + Reinigen



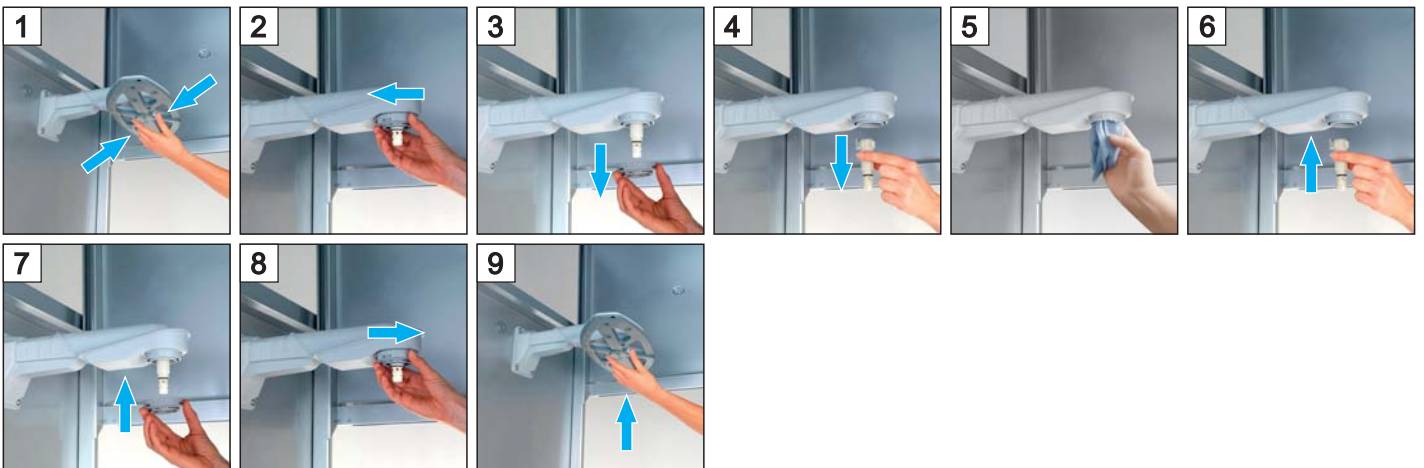
## Spülfelder reinigen



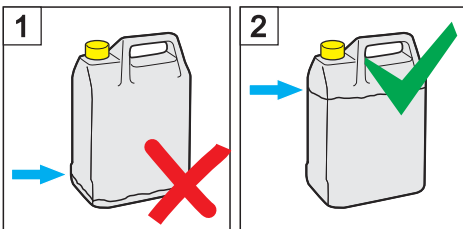
## Salz nachfüllen



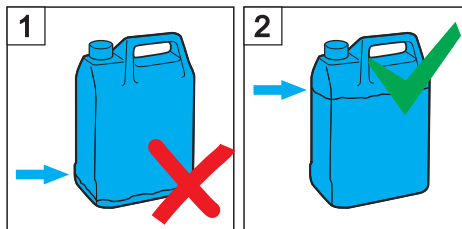
## Spülfeldlager reinigen



## Reinigerkanister tauschen



## Klarspülerkanister tauschen



Mehr Informationen:  
Siehe Betriebsanleitung  
[www.winterhalter.biz/manuals](http://www.winterhalter.biz/manuals)



Winterhalter Gastronom AG  
9464 Rüthi/SG  
T +41 (0) 71 767 80 00  
F +41 (0) 71 767 80 60  
[info@winterhalter.ch](mailto:info@winterhalter.ch)  
[www.winterhalter.ch](http://www.winterhalter.ch)