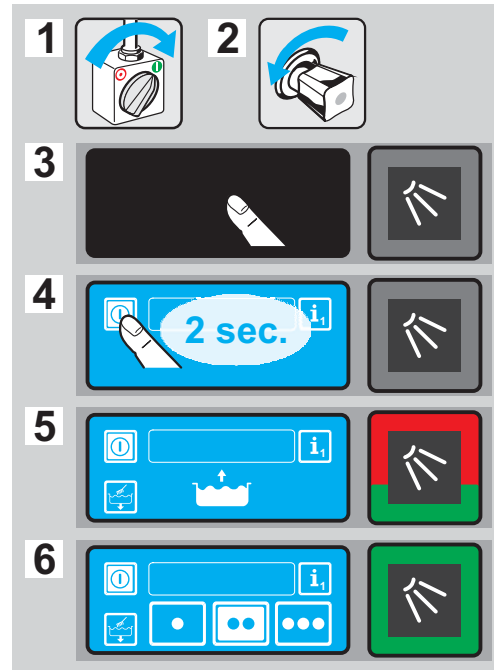


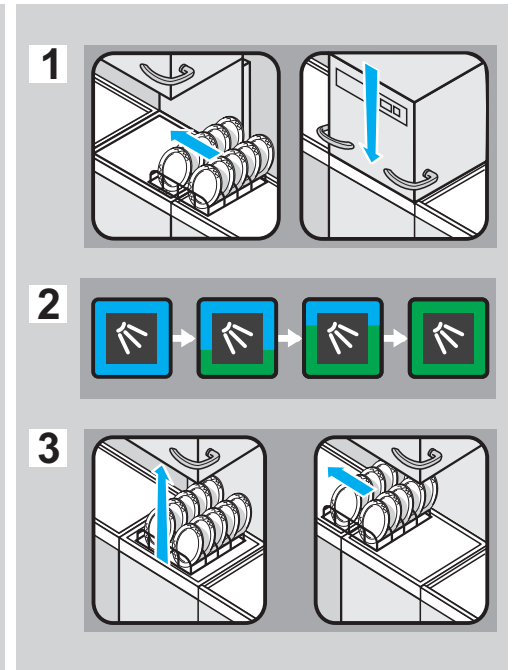
PT-Serie



Maschine einschalten



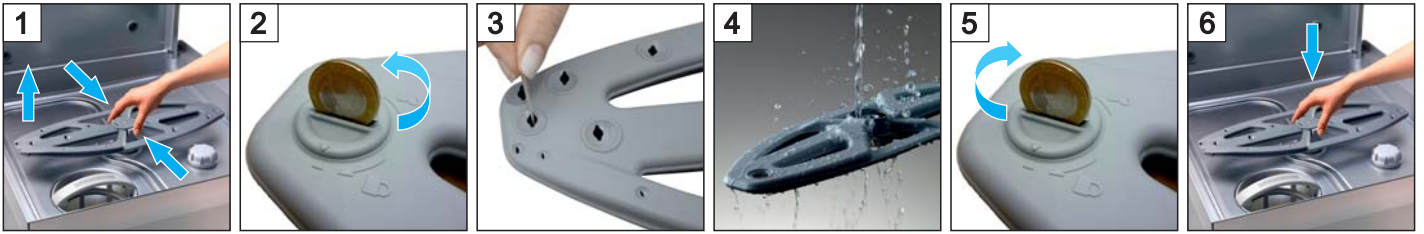
Spülen



Ausschalten + Reinigen



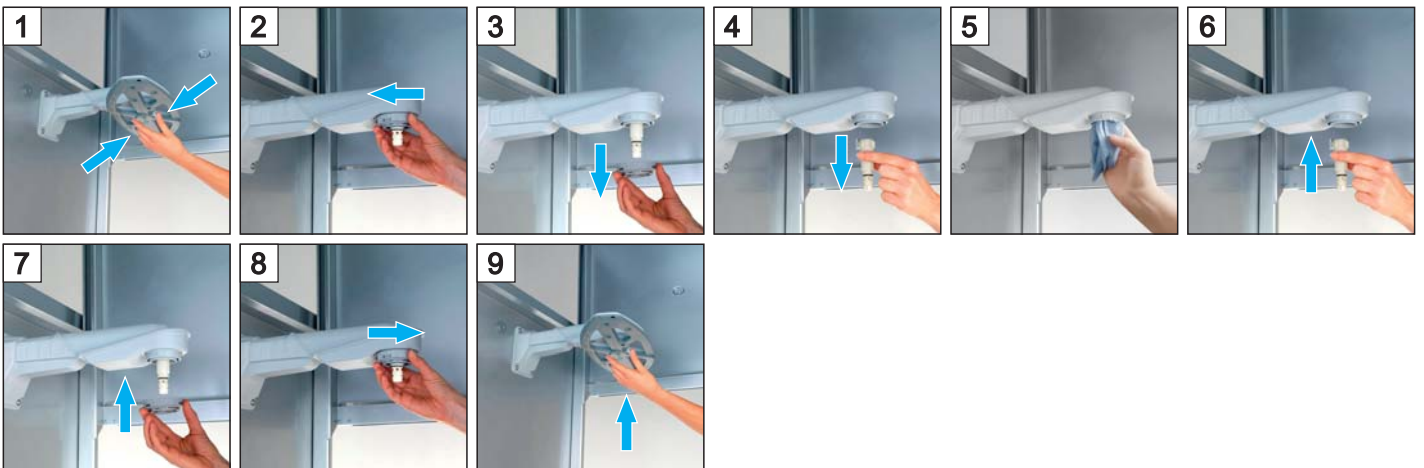
Spülfelder reinigen



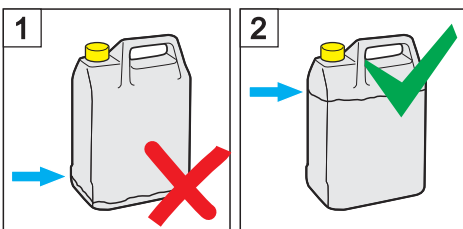
Salz nachfüllen



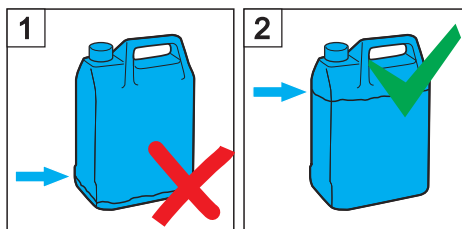
Spülfeldlager reinigen



Reinigerkanister tauschen



Klarspülerkanister tauschen



Mehr Informationen:
Siehe Betriebsanleitung
www.winterhalter.biz/manuals



Winterhalter Gastronom AG
9464 Rüthi/SG
T +41 (0) 71 767 80 00
F +41 (0) 71 767 80 60
info@winterhalter.ch
www.winterhalter.ch